

**FUTURE OPERATING ENVIRONMENT  
TORRES STRAIT TROPICAL ROCK LOBSTER FISHERY  
DRAFT FOR DISCUSSION**

JANUARY 2011

Prepared by the Australian Fisheries Management Authority on behalf of the Torres Strait Protected Zone Joint Authority.



Queensland  
Government



## **DISCLAIMER**

This draft Statement of Future Operating Environment for the Torres Strait Tropical Rock Lobster Fishery is an evolving document that is a guide only on the on the future management arrangements for the fishery. There are also a number of unresolved management arrangements included in the document that will need to be agreed to by stakeholders. Current options on these arrangements have been provided.

It is important to note that the arrangements outlined within the document represent the management arrangements that may be applicable to the Tropical Rock Lobster Fishery at the time of any announcement on structural adjustments and on implementation of a management plan (and quota). Management arrangements can and will change in the future to meet the needs of the fishery.

## **DRAFT FOR CONSULATION**

The PZJA Standing Committee is committed to the future sustainability and economic viability of the fishery.

The Standing Committee is committed to fulfilling the aspirations of its stakeholders, including supporting indigenous fishers in increasing their ownership of the Torres Strait Rock Lobster Fishery.

In order to progress the management of the fishery, the PZJA Standing Committee has drafted a Future Operating Environment for the fishery aimed at providing stakeholders with an outline of how the Tropical Rock Lobster Fishery will operate under a new management regime.

It is important to note that not all aspects of the future management arrangements have been resolved. Therefore, the Standing Committee is committed to consulting with stakeholders to seek advice and discuss options for developing the fishery under the new regime.

We welcome written comments on the working draft Future Operating Environment document by the 17<sup>th</sup> February 2011. Please submit comments to Malcolm Southwell, AFMA, [Malcolm.southwell@afma.gov.au](mailto:Malcolm.southwell@afma.gov.au).



DRAFT



**TABLE OF CONTENTS**

	<b>PAGE</b>
1 Abbreviations and acronyms .....	4
2 About this document .....	5
3 Future operating environment .....	5
3.1 Fishing season and closures .....	5
3.2 Size and bag limits .....	6
3.3 Gear restrictions .....	6
3.4 Licensing and temporary transfers .....	
3.4.1 Licensing arrangements .....	7
3.4.2 Commercial fishing licence .....	7
3.4.3 Master fisherman’s licence .....	8
3.4.4 Processor/carrier boat licence .....	9
3.4.5 Fish receiver licence .....	9
3.4.6 Temporary transfers.....	9
3.5 Quota management system .....	
3.5.1 Total Allowable Catch (TAC) .....	10
3.5.2 Quota allocation .....	10
3.5.3 Individual transferrable quota allocation .....	12
3.5.4 Quota monitoring system .....	12
3.6 Catch reporting .....	13
3.7 Boat replacement policy .....	14
3.8 Cost recovery .....	14
3.9 Species included .....	14
3.10 Other requirements of fishers .....	14
4 Compliance .....	14
5 Interim management arrangements .....	15
6 Further information .....	15
7 Management arrangements at a glance.....	16



## 1 ABBREVIATIONS AND ACRONYMS

CR	Tropical Rock Lobster (or crayfish) entry symbol
FRL	Fish Receivers Licence
PZJA	Protected Zone Joint Authority
TIB	Traditional Inhabitant Fishing Boat Licence
TMJ	Master Fisherman's Licence
TRL	Tropical Rock Lobster

DRAFT



## 2 ABOUT THIS DOCUMENT

In 2005, the Protected Zone Joint Authority (PZJA) made a number of decisions regarding resource allocation and management arrangements in the Torres Strait Tropical Rock Lobster Fishery that would significantly change the future operating environment of this fishery.

In particular, the PZJA agreed to:

1. a structural adjustment within the Tropical Rock Lobster Fishery to support a shift in resource allocation from the non-Traditional Inhabitant to the Traditional Inhabitant sector, with the short-term goal of achieving an equal allocation between the sectors (50:50) and a long-term target of increasing the TIB allocation to 70%; and
2. manage the TRL Fishery under a quota monitoring system which would be implemented through a management plan.

Implementation of these past PZJA decisions will require changes to the current management regime.

This draft statement of the Future Operating Environment is aimed at providing stakeholders with an outline of how the Tropical Rock Lobster Fishery will operate at the time the new management regime is implemented and how this differs to the current operating environment.

It is important to note that not all aspects of the future management arrangements have been resolved and some legislative changes will be necessary in order to create a functional framework for a quota management system to operate within. Where arrangements are not finalised, possible options for management arrangements are provided in this document.

The PZJA will continue to rely on its consultative structure and processes to provide advice on the fishery and management arrangements. The PZJA in making decisions are also required to meet the objectives of the *Torres Strait Fisheries Act 1984* and specific objectives for the Tropical Rock Lobster Fishery in a dynamic management environment.

## 3 FUTURE OPERATING ENVIRONMENT

Under the proposed new management arrangements the Tropical Rock Lobster Fishery will operate under a management plan. On implementation of the management plan the following management arrangements will apply:

### 3.1 Fishing season and closures<sup>1</sup>

The length of the lobster fishing season will remain the same however the commencement day of the season is yet to be determined. The season will commence on either:

- 1 December to 30 September; or
- 1 February to 31 January.

---

<sup>1</sup> Fishing closures, size restrictions and bag limits are currently included in Fishing Management Notice 80.



Under either arrangement the existing commercial fishing and hookah closures will remain the same and be from:

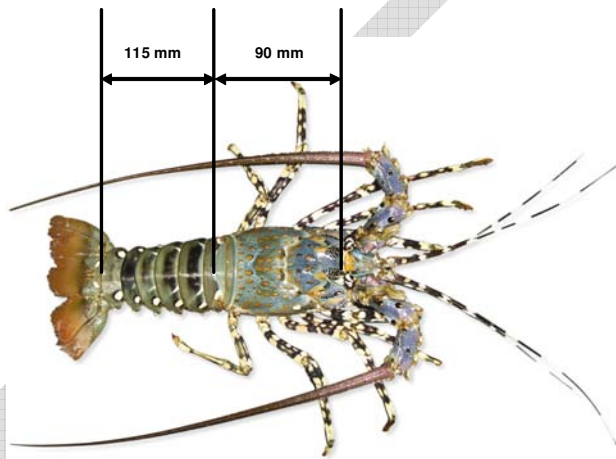
- Commercial fishing closure – 1 October to 30 November (inclusive) each year; and
- Hookah closure – 1 December to 31 January (inclusive) each year.

There will be no area closures.

### 3.2 Size and bag limits<sup>1</sup>

The same size limits for Tropical Rock Lobster will continue to apply to all commercial, traditional and recreational<sup>2</sup> take and include:

- Minimum of 90mm carapace length; OR
- Minimum of 115mm tail length.



*Photo courtesy of the Department of Employment, Economic Development and Innovation*

With the introduction of quota, bag limits will still apply to traditional and recreational<sup>2</sup> take of Tropical Rock Lobster and is restricted to three lobsters per person, or six lobsters per boat, whichever is less as per current arrangements.

### 3.3 Gear restrictions<sup>1</sup>

Gear restrictions will remain the same. Tropical Rock Lobster may only be taken by hand or with the use of hookah equipment.

### 3.4 Licensing and temporary transfers

The same licensing requirements for commercial fishing will continue to apply to both Traditional and existing non-Traditional Inhabitant fishers in the Tropical Rock Lobster Fishery.

<sup>2</sup> Note that recreational take will not be managed under the new manage plan but will continue to be managed by Fisheries Queensland.

A person wishing to fish in the fishery will be required to hold a fishing licence with an endorsement for the Tropical Rock Lobster Fishery (termed an Entry and shown as “CR” on the license card) however under the new management framework a more streamlined licensing arrangement will be implemented. These licensing arrangements and requirements are outlined below:

### 3.4.1 Licensing arrangements

On commencement of the management plan, more streamlined licensing arrangements will be implemented to allow for a single commercial fishing operation to be licensed under one primary licence with associated tenders registered on the primary licence (denoted by a number in brackets following the CR entry).

For example, a primary boat and its associated tenders will be licensed under a single licence as opposed to the primary boat and each tender being individually licensed. A processor/carrier boat licence type TPC-A, that allows a primary boat to receive, carry and process lobster from its own tenders, will no longer be required.

A Master Fisherman’s Licence may still be required for a person to be in charge of a primary or tender boat (as outlined in section 3.4.3).

Wherever possible the PZJA will implement consistent licensing arrangements for both sectors and will consider licensing arrangements that support the development of viable businesses for both the remaining non-Traditional Inhabitant operators and Traditional Inhabitant operators.

### 3.4.2 Commercial Fishing Licence

#### *Traditional Inhabitant licence requirements*

- All Australian Traditional Inhabitants of the Torres Strait will still be required to hold a Traditional Inhabitant Fishing Boat licence (referred to as TIB licence) bearing a CR entry to fish commercially in the Tropical Rock Lobster Fishery. The current policy limiting crew positions on TIB vessels to Torres Strait Islanders will be reviewed as part of the development of the management plan to ensure that the policy delivers the most appropriate benefits to Traditional Inhabitants.
- All TIB licences will be renewable on payment of a fee.
- The number of TIB licences in the fishery may be limited at some point in the future to allow for individual transferable quota. The PZJA will make a decision on the form of a quota management system (e.g. a competitive quota, individual transferable quota or other) prior to implementation of the management plan in consultation with TSRA and TIB licence holders.
- A TIB licence may be transferred to another Traditional Inhabitant who meets the criteria to hold a TIB licence (i.e. is a Torres Strait Traditional Inhabitant who resides in the Protected Zone or the outside but near areas).

#### *Non-Traditional Inhabitant licence requirements*

- All non-Traditional Inhabitant fishers will still be required to hold a Torres Strait Fishing Boat Licence bearing a CR entry but must also hold unused units of fishing capacity to fish commercially in the Tropical Rock Lobster Fishery (see section 3.5 on Quota management).
- The existing PZJA policy to limit entry into the Tropical Rock Lobster Fishery to the Traditional Inhabitant sector will remain in place and the PZJA will not issue any new fishing boat licences to non-Traditional Inhabitants.



- Fishing boat licences held by non-Traditional Inhabitants that remain valid after any structural adjustment and with the implementation of the management plan will continue to be renewable until they are permanently surrendered (i.e. sold) by the licence holder to the Traditional Inhabitant sector.
- All existing fishing boat licences held by non-Traditional Inhabitants will be renewable on payment of a fee.
- Non-Traditional Inhabitant fishers operating with a fishing boat licence with tenders will be limited to a maximum of four tenders unless they operated with more than the maximum number of tenders prior to the change in management arrangements. In this case, the operators would be allowed to maintain the same number of tenders.
- A fishing boat licence held by a non-Traditional Inhabitant may be transferred to a person who is an Australian citizen and is either a Traditional Inhabitant or non-Traditional Inhabitant.

#### *PNG cross-endorsements under Torres Strait Treaty*

- Under the catch sharing arrangements outlined in the Torres Strait Treaty, Papua New Guinea (PNG) is entitled to 25% of the Tropical Rock Lobster Fishery within the Australian jurisdiction.
- PNG operators may be provided with a cross-endorsement to fish for lobster in the Australian jurisdiction.
- PNG Cross-endorsement holders will have complementary management arrangements to an Australian fishers which will be outlined in the plan or as conditions on their endorsement.

#### 3.4.3 Master Fisherman's Licence

The future requirement of a master fisherman's licence (referred to as a TMJ licence) is yet to be determined. The PZJA are considering the following three options:

1. Retain the existing policy:
  - a. a person is required to have a TMJ to operate all vessels (primary and tender) within a non-Traditional Inhabitant commercial fishing operation;
  - b. a TMJ can only be granted to an Australian Traditional Inhabitant; and
  - c. existing TMJs granted to non-Traditional Inhabitants will remain valid on implementation of the plan.
2. Master fisherman licences for everyone:
  - a. a person is required to have a TMJ to operate all vessels (primary and tender) within a non-Traditional Inhabitant commercial fishing operation;
  - b. there will be no limit on the granting of TMJ licences to Traditional or non-Traditional Inhabitants.
3. No master fisherman licences:
  - a. the PZJA will remove the requirement for TMJs to be in charge of vessels in the Tropical Rock Lobster Fishery.

The PZJA will consult with stakeholders before making a decision on these arrangements.



#### 3.4.4 Processor/carrier Boat Licence

A processor/carrier boat licence (TPC) is a type of licence granted to carry, or process and carry fish on a vessel. TPC licences require a CR entry to carry and/or process lobster taken from another licenced vessel.

Under the new management arrangements only two types of TPC licences will exist:

1. TPC-B – this type of licence allows the licenced boat to carry fish caught by another boat, however, the product must remain in the same form (e.g. whole live lobsters must remain in that form and cannot be processed into frozen tails).
2. TPC-C – this type of licence allows the licenced boat to process and carry fish caught by another boat (ie the product may be processed, for example whole lobster may be tailed).

As per section 3.4.1, TPC-A licences will not be required under the new management arrangements as fishing operations with primary and tender boats will have tenders registered to the one primary licence.

#### 3.4.5 Fish Receiver Licence

Under the new management arrangements it will be necessary for anyone who receives fish from a commercial fisher, and with the intention to sell the fish, to hold a Fish Receivers Licence (FRL). This will include:

- TPC-B or TPC-C licence holders who intend to sell the product (e.g. buyer boats); and
- any onshore fish buyer/processor.

Transport companies such mother ships or planes that do not intend to sell the fish will not be required to hold a FRL.

A FRL will be granted for a period of one year and will be renewable on payment of a fee.

#### 3.4.6 Temporary transfers

With any structural adjustment in the Tropical Rock Lobster Fishery, a Sunset licence scheme will be implemented and will allow for the temporary transfer of licenses (held by TSRA on behalf of Traditional Inhabitants) to non-Traditional Inhabitants under lease back arrangements. A similar scheme has successfully been operating in the Torres Strait Finfish Fishery since 2008.

This scheme will allow the fishery to maintain the product supply and markets through allowing non-Traditional Inhabitants to continue to participate in the fishery until such time as the Traditional Inhabitant sector increase their level of catch and meet market demand.

A transparent tender process, open to all non-Traditional Inhabitant fishers, will be run by the TSRA to determine who the Sunset licences will be leased to. These leases will be formalised by the PZJA through the temporary transfer of the licence. The TSRA are currently developing a leasing arrangements policy for the Tropical Rock Lobster Fishery.

### **3.5 Quota management system**

On implementation of the *Tropical Rock Lobster Fishery Management Plan*, the PZJA will implement a quota management system for the fishery. This will be in the form of a Total Allowable Catch (TAC) and will be expressed in whole kilograms of Tropical Rock Lobster. How the TAC will be determined and allocated to fishers is explained below.



### 3.5.1 Total Allowable Catch

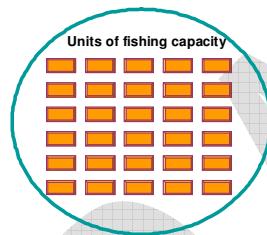
- The PZJA will determine an annual TAC for the Tropical Rock Lobster Fishery based on recommendations from the Tropical Rock Lobster Resource Assessment Group. The TAC will be based on visual surveys conducted prior to the season opening, stock assessment and historic catch records following a set of agreed harvest decision rules.
- The final TAC may vary significantly from year to year in accordance with the predicted abundance of small (recruiting) lobsters.

In determining the TAC the PZJA may take into account the proportion of lobster caught for traditional purposes. In this case the applicable TAC to the Tropical Rock Lobster Fishery will be referred to as the Total Allowable Commercial Catch (TACC).

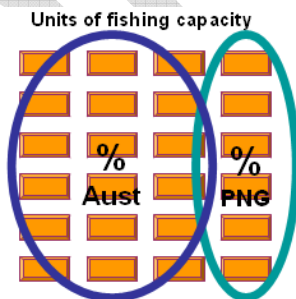
### 3.5.2 Quota allocation

On implementation of quota, the PZJA will split the commercial fishing resource into shares. These shares (or units) will be known as Units of Fishing Capacity (UFC). For example:

- (a) The total number of units in the fishery represents the total commercial fishing resource in the fishery. The number of units in the fishery does not change from year to year.



- (b) 25% of the UFCs will be held aside by the Australian Government to meet PNG catch sharing obligations under the Torres Strait Treaty. The remaining 75% of units will be allocated among Australian stakeholders.



Australia = 75%

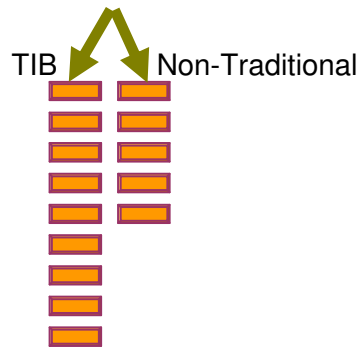
PNG = 25%

- (c) The allocation of Australian units between non-Traditional Inhabitant fishers and TIB sectors (shown below) is dependent on the agreed historic shares of the fishery (based on historic records) and subsequent buy outs of fishing boat licences held by non-Traditional Inhabitant fishers in 2007/2008.

The future share of lobster quota available to the TIB and non-Traditional Inhabitant sectors will change following any further structural adjustment and any subsequent transactions between sectors that may follow. As indicated below, the TIB share will increase whilst the non-Traditional Inhabitant share will decrease.



### Australian UFCs



### Current:

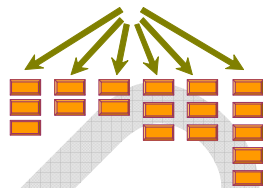
TIB sector = 53%  
Non-Traditional sector = 47%

### Future:

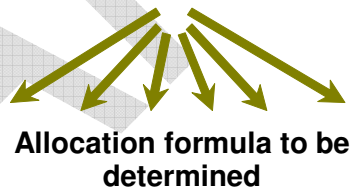
TIB sector to increase  
Non-Traditional sector to decrease

- (d) Non-Traditional Inhabitant licence holders remaining in the fishery will be allocated UFCs based on the allocation formulae agreed to by the PZJA in 2007<sup>3</sup>. Allocation of quota to non-Traditional Inhabitants operating under a lease agreement will be determined by the TSRA.
- (e) The allocation processes for Australian Traditional Inhabitants is yet to be determined, however, units will be allocated to individual Traditional Inhabitants or groups representing Traditional Inhabitants such as TSRA. The allocation process will most likely be recommended by an independent allocation advisory panel.

### Non-Traditional UFCs



### TIB UFCs



- (f) Each UFC will have a value in terms of kilograms of Tropical Rock Lobster. The number of units a fisher holds and the value of each unit will determine how much catch (quota) an individual licence holder or group can take in any fishing season. The value of UFCs is dependent on the TAC, the higher the TAC the greater the value of each UFC and vice versa.

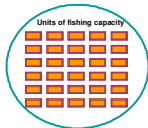
It is important to note that it is the value of UFC that varies each year, not the number of UFC an individual or group holds. This enables the PZJA to account for variations in the TAC between years and therefore the amount of Tropical Rock Lobster (in Kilograms) that a fisher can retain each season.

The value of each UFC will be calculated in the following manner:

<sup>3</sup> Based on recommendations of the Independent Allocation Advisory Panel agreed to by the PZJA out of session in June 2007. See [www.pzja.gov.au/notices/notices/2007/n20070607/AAP%20TRL%20FINAL%20\(web\).pdf](http://www.pzja.gov.au/notices/notices/2007/n20070607/AAP%20TRL%20FINAL%20(web).pdf).



TAC/TACC ÷ Total units in fishery = value of individual unit  
(in kilograms)



For example:

If the TAC was 500t and there are a total of 10000 Units in the fishery each unit would =50kg

Unit Value = 500000kg/10000 = 50kg

*(NOTE: Figures used here are examples only)*

- (g) The **number** of units an individual fisher or group holds and the **value** of a unit in any given season is used to calculate the amount of Tropical Rock Lobster a fisher or group of fishers can take in that season.

For example:

Seasonal Quota = number of units held x value of each unit

Therefore if a fisher holds 100 units and each unit has a value of 50kg (for that particular season), then the fisher would be able to take 5000kg (5 tonnes)

100 units x 50kg = 5000kg (5 tonnes) season quota

*(NOTE: Figures used here are examples only)*

- (h) TAC/TACC and the value of fishing capacity will be expressed as kilograms of whole lobster. A conversion factor for converting tail to whole lobster will be used. The current conversion factor is 1:2.67.

### 3.5.3 Individual Transferable Quota Allocation

- As illustrated in section 3.5.2, non-Traditional Inhabitants who hold a fishing boat licence will be allocated an Individual Transferrable Quota (ITQ) in the form of unused UFC. An unused UFC is a unit of which the value (kgs) has not been caught by the fisher in that season. Once the value of the unit has been registered as taken by the holder, the unit is considered to be used for the remainder of the season.
- Unused UFC can be traded between non-Traditional Inhabitant and TIB licence holders with a CR entry with the following conditions:
  - UFC can be permanently transferred between TIB licence holders (or groups that represent them such as TSRA).
  - UFC can be permanently transferred between non-Traditional Inhabitant licence holders.
  - UFC can be permanently transferred from a non-Traditional Inhabitant licence holder to a TIB licence holder (or groups that represent them such as TSRA).
  - UFC can be temporarily transferred (i.e. for a defined time period) from a Traditional Inhabitant to a non-Traditional Inhabitant licence holder.

### 3.5.4 Quota monitoring system

- A quota monitoring system will be implemented and strictly enforced to ensure Tropical Rock Lobster catch does not exceed the TAC/TACC.



- A quota monitoring system is yet to be finalised but is envisaged to include logbook reports (as per currently required by non-Traditional Inhabitant fishers), Catch Disposal Records (CDR) (similar to Docket book records) provided by Fish Receivers and offload reports via an automated phone-in recording system.
- For those fishers operating under an individual allocation (ITQ), catch reported at the time of offload (via an automated reporting system) will be subtracted from the licence holders' entitlement (quota) and monitored via a paper trail (CDRs and logbook records). It is the responsibility of the fisher to maintain accurate and up-to-date records and to be aware of how they are tracking against their quota. Fishing will cease once their entitlement is reached.
- For those fishers operating under a different system, such as a competitive quota, catch will be reported at the time of offload (via an automated reporting system) and will be subtracted from the collective entitlement (competitive quota) and monitored via a paper trail (CDR records). Fishing will cease once the collective entitlement is reached.
- Licensees will not be permitted to move product from the area of the fishery to a landing point outside of the fishery without first weighing the product and completing transfer documentation.
- Fishers may not be able to travel outside the Torres Strait Protected Zone (TSPZ) with Tropical Rock Lobster taken in the area without first having the catch deducted from their quota holdings. In addition, a fisher may not be able to enter the TSPZ with Tropical Rock Lobster taken from outside the area. Unless other suitable management arrangements can be found, this restriction is considered necessary to reduce the risk of fishers not reporting catch against quota in either the Queensland or Torres Strait area of jurisdiction.
- Tropical Rock Lobster will be permitted to be landed as tails or live/whole lobster. Landed weight of tails will be converted to a whole weight equivalent using a conversion factor for each kg of tails. The PZJA currently use a conversion factor is of 2.67 which is based on the best available information.
- Tropical Rock Lobster being transhipped by mothership or plane may require a transshipment notice to accompany the load.

### **3.6 Catch Reporting**

- Any fisher using a TIB licence recording a boat over seven meters, and all operations with either a Torres Strait Fishing Boat Licence or Sunset Fishing Boat Licence will be required to report daily catch and effort in the fishery using TRL04 logbooks as per current arrangements.
- Fishers operating under either a Torres Strait Fishing Boat Licence or Sunset Fishing Boat Licence will be required to prior report unloading of catch to a shore facility or carrier boat.
- Fishers operating under a TIB licence will be required to provide catch and effort information to Fish Receivers for inclusion on Catch Disposal Records (CDR).
- Fishers will be required to provide a fishing boat licence card when selling catch to a Fish Receivers for correct identification of the operation under which the catch being sold was caught.



### **3.7 Boat Replacement Policy**

It is yet to be determined if the PZJA's boat replacement policy will remain the same under the new management regime. Three options are currently being considered including:

1. Retain the existing policy where an existing boat measuring:
  - a. 5 meters or less can be replaced by a boat no longer than 5 meters; or
  - b. 5 to 6 meters can be replaced by a boat no longer than 6 meters; or
  - c. 6 to 10 meters can be replaced by a boat no longer than 10 meters; or
  - d. 10 to 14 meters can be replaced by a boat no longer than 14 meters; or
  - e. Great than 14 meters can be replaced by a boat the same size.
2. All boats smaller than 14 meters could be replaced by a vessel of up to 14 meters. All boats greater than 14m can be replaced by a boat of the same size.
3. All primary boats could be replaced by a vessel of up to 20 meters.

The PZJA will consult with stakeholders before making a decision on these arrangements.

### **3.8 Cost recovery**

The future costs of managing the TRL Fishery may be recovered to some degree from commercial licence holders through the provisions of the *Fisheries Levy Act 1984*. The proportion of the costs attributable to be levied will be determined by the PZJA taking into account matters relevant to the particular circumstances of the fishery.

### **3.9 Species included**

The management plan, including TAC and quota monitoring will apply to all tropical lobster species taken and not just the Ornate Tropical Rock Lobster, *Panulirus ornatus*.

### **3.10 Other Requirements of fishers**

- Fishers must only offload Tropical Rock Lobster to a licenced Fish Receiver or provide a transhipment notice if using a transport provider to tranship the product to a Fish Receiver.
- Tropical Rock Lobster taken and held for traditional purposes by TIB fishers may be required to be marked for example by tail marking (clip of the tail of the lobster).

## **4 COMPLIANCE**

Queensland Boating and Fisheries Patrol will continue to provide enforcement and compliance services to the PZJA for domestic commercial fisheries in the Torres Strait. AFMA will continue to provide compliance services for illegal and unregulated foreign fishing in the same area.

Breaches to commercial fishing rules and regulations as set out in the *Torres Strait Fisheries Act 1984*, *Torres Strait Fisheries Regulations 1985*, Fisheries Management Notice No.80 and



the new management plan may result in warnings, fines or prosecution and may incur the appropriate penalty as described in the legislation.

## 5 INTERIM MANAGEMENT ARRANGEMENTS

Since 2003 the PZJA have implemented a number of temporary input controls to the Torres Strait Tropical Rock Lobster Fishery. These arrangements have included:

- A 30% tender reduction applicable only to the non-Traditional Inhabitant sector; and
- A seven day moon-tide hookah closure applicable to all sectors.

Temporary input controls will only be utilised for sustainability reasons, and if needed to increase efficiency of all sectors. All management arrangements including those implemented prior to the management plan, and those included in the management plan will be made with these principles in mind.

## 6 FURTHER INFORMATION

For further information on the future operating environment within the Torres Strait Tropical Rock Lobster Fishery contact:

### **Australian Fisheries Management Authority**

Manager (Thursday Island)

Ph: (07) 4069 1990

Fax: (07) 4069 1277

Senior Manager (Canberra)

Ph: (02) 6225 5308

Fax: (02) 6225 5500

For further information on licensing contact:

### **Fisheries Queensland**

Fisheries Management Officer (Torres Strait)

Ph: (07) 3225 1851

Fax: (07) 3225 8146

Or visit the Protected Zone Joint Authority website on [www.pzja.gov.au](http://www.pzja.gov.au)



## 7 MANAGEMENT CHANGES AT A GLANCE

Management Arrangements	Current Legislation	Management Arrangements to apply under new regime	Applicable to	
			TIB	Non-TIB
Quota management system	✘	✓	✓	✓
Quota monitoring	✘	✓	✓	✓
Fishing Licence	✓ (TSFA)	✓	✓	✓
TPC-A	✓ (TSFA)	✘	n/a	n/a
Master Fishermans Licence	✓ (TSFA)	To be determined <sup>#</sup>	?	?
Catch reporting in TRL04 logbooks or similar	✓ (licence condition)	✓	✓ <sup>4</sup>	✓
Provision of information for catch disposal records	✘	✓	✓	✓
Sell to Fish Receiver	✘	✓	✓	✓
Minimum legal size limit	✓ (FMN 80)	✓	✓	✓
Gear Restrictions	✓ (FMN 80)	✓	✓	✓
Traditional bag limit	✓ (FMN 80)	✓	✓	n/a
Boat Replacement Policy	✓	To be determined <sup>#</sup>	?	?
Fishery closure (Oct and Nov)	✓ (FMN 80)	✓	✓	✓
Hookah closure (Dec and Jan)	✓ (FMN 80)	✓	✓	✓
Area closures	✘	✘	n/a	n/a
30% tender reduction	✓ (TVH licence condition)	✘	n/a	n/a
Moon-tide hookah closure	✓ (licence condition)	✘	n/a	n/a

✘ = not included in current legislation or not to be included in new management plan.

✓ = included in current legislation or to be included in new management plan. In TIB/non-TIB column, the ✓ indicates to which sector the arrangement applies.

# = these management arrangements will be determined after consultation.

n/a indicates where an arrangement is not applicable, for example traditional fishing arrangements are not relevant to TVH fishers as they are not permitted to fish traditionally.

<sup>4</sup> Will be a requirement for TIB fishers using boats greater than 7m.

